

INSTALLATION INSTRUCTIONS
TABOS Series EM Locks EMS-380M

Specifications

| | |
|-----------------------|--------------------------|
| Holding Force | 850lbs (380Kg) |
| Input Voltage | DC12V, DC24V |
| Current Draw | DC12V@600mA, DC24V@300mA |
| Magnetic Dimension | 220mm(L)x45mm(W)x30mm(H) |
| Armature | 185mm(L)x45mm(W)x14mm(H) |
| Operating temperature | -20 °C ~ +60 °C |
| Weight | 2.5 Kg |



EMS-380M

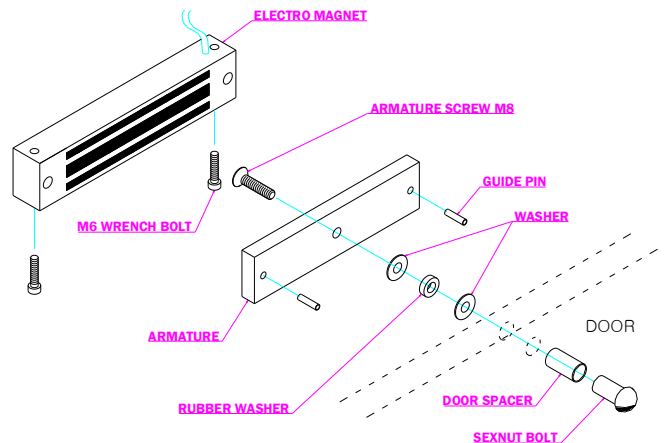
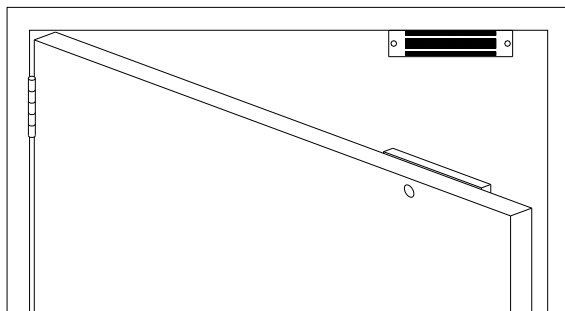
Precautions



- Shut off all power going to header before attempting any wiring procedures.
- Electromagnetic Lock has peak performance when installed in an ideal location.
- Make sure to correctly install, in order to avoid an unexpected accident, such as falling magnetic lock.
- Perfect wiring will resist fire and prevent electric shocks.
- Lock and Armature face should be at free of dirt, rust, burrs etc. Clean and lubricate with rust inhibitor such as WD40 to insure high efficiency and long life span.
- No operation in no electricity (Fail safe type). Use back-up-power if it is required.
- Electromagnetic lock is not uses of burglar and fire preventives. Damage and accident resulting from fire, disaster and burglar are not covered by product warranty.
- Modification is allowed for upgrading in quality and design.

Installation Method

Outswing Door



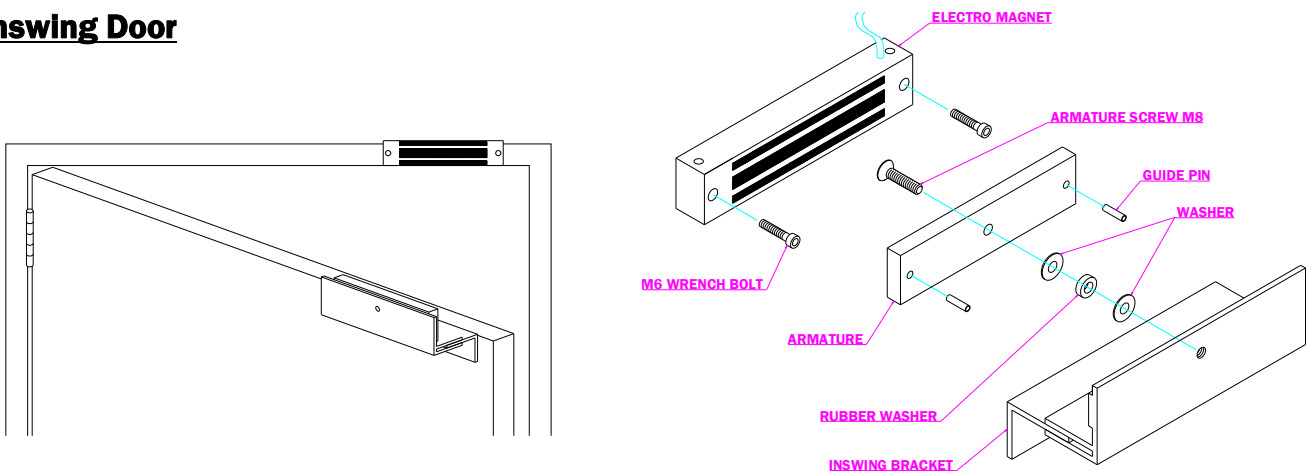
DOORNICS CO., LTD.

SK Techno B/D No. 903, 16-4, Seongsu-Dong 1-Ga, Seongdong-Gu,
 Seoul, 133-112, Korea
 Tel : +82-2-3409-2590~4 Fax : +82-2-3409-2100
 E-mail : doornics@chollian.net Website : www.doornics.co.kr

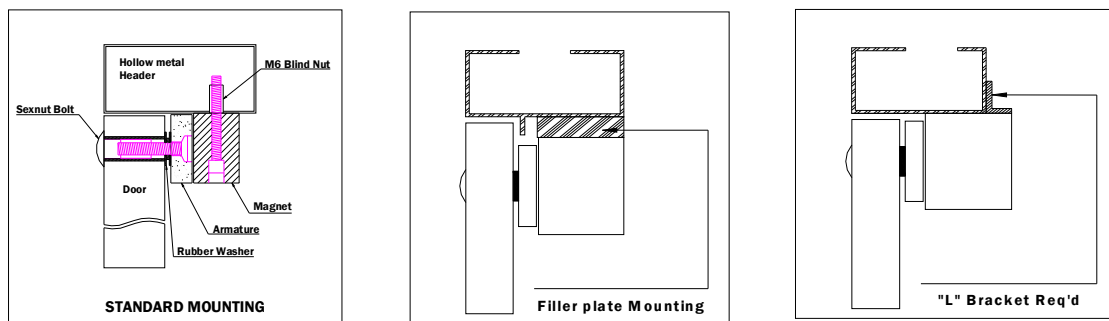


The products are manufactured under an ISO 9001 & 2000 and Certified CE.

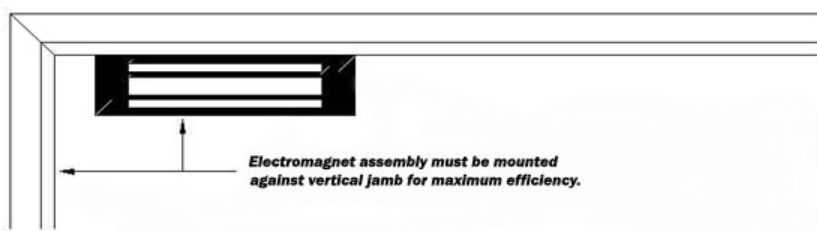
Inswing Door



1. Inspect the door frame and determine if L bracket (Option) is required.



※ Please use filler plate when it is installed with wooden frame.



2. How to use template

- Fold the provided template on the dotted line to form a 90° degree angle.
- With the door in a closed position, place one edge of template against the header and another edge of it against the lock jamb.

DOORNICS CO., LTD.

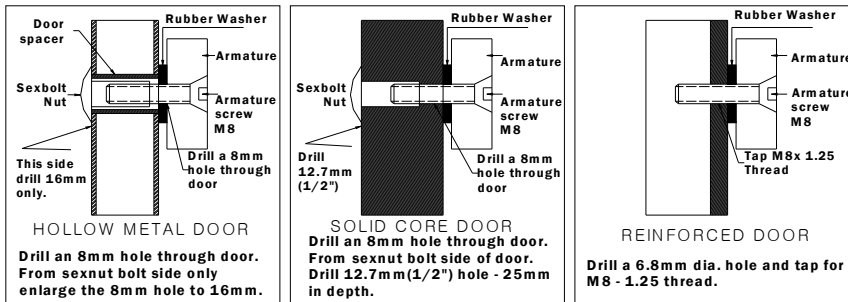
SK Techno B/D No. 903, 16-4, Seongsu-Dong 1-Ga, Seongdong-Gu,
Seoul, 133-112, Korea
Tel : +82-2-3409-2590~4 Fax : +82-2-3409-2100
E-mail : doornics@chollian.net Website : www.doornics.co.kr



The products are manufactured under an ISO 9001 & 2000 and Certified CE.

3. Hole size for Armature mounting screw varies with the door configuration.

Refer to the following illustration for the correct hole size.

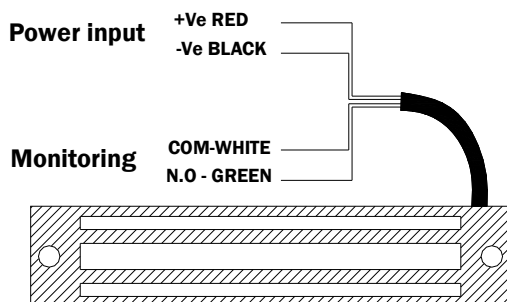


Fix the Armature plate not too tightly, to let the rubber washer move, in order to make the Armature plate automatically adjust to the proper position with the magnet.

- 4. Install anti-spin guide pins in back of Armature and mount the Armature to the door with hardware provided as per the illustration.**
- 5. Insert blind nut to the frame screw hole before installation of EM Lock, in order to protect the movement of the magnetic lock.**
- 6. Firmly tighten all screws, install anti-tamper cap into the hole, covering all socket head mounting screws. Use a soft hammer to avoid damage of lock case.**
- 7. Refer to the wiring instruction before applying power.**

Wiring Instruction

Electromagnet Wiring Instruction



- Check input voltage connecting the lock, damage to the lock may result from incorrect voltage input, this damage is not covered by the product warranty.
- DO NOT touch the lock face with your hands.

DOORNICS CO., LTD.

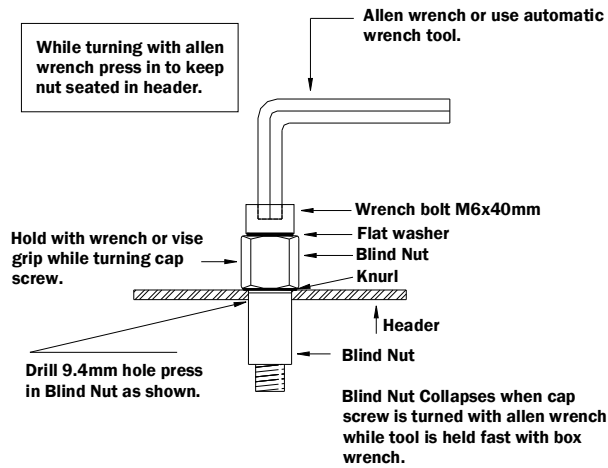
SK Techno B/D No. 903, 16-4, Seongsu-Dong 1-Ga, Seongdong-Gu, Seoul, 133-112, Korea
 Tel : +82-2-3409-2590~4 Fax : +82-2-3409-2100
 E-mail : doornics@chollian.net Website : www.doornics.co.kr



The products are manufactured under an ISO 9001 & 2000 and Certified CE.

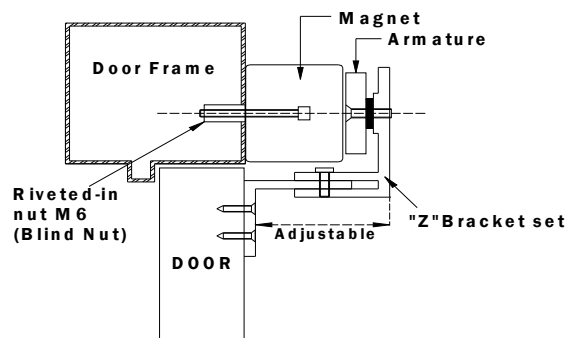
Blind Nut

Collapsing the Blind Nut



Bracket Mounting

Face Mounting Electromagnetic Lock with "Z" Bracket for Inswing Door



Order Details

Model No.

Description

EM-380M

"TAROS" Electromagnetic Lock (850lbs / 380kg)



Z-380M

"TAROS" Mounting "Z" bracket



DOORNICS CO., LTD.

SK Techno B/D No. 903, 16-4, Seongsu-Dong 1-Ga, Seongdong-Gu, Seoul, 133-112, Korea
 Tel : +82-2-3409-2590~4 Fax : +82-2-3409-2100
 E-mail : doornics@chollian.net Website : www.doornics.co.kr



The products are manufactured under an ISO 9001 & 2000 and Certified CE.